

Renault- Smart Key IMMO2-Help file

This help file basically includes 4 parts: Function, Attention, Reference and Operation.

Function

1. Program smart key
2. Collision recovery: If the car collided, the system will automatically start the protection program, and after repair, you need to cancel the protection via this function to start the vehicle.

Note:

"IMMO 2" generally only for the Koleos models, if failed to program, for 2010-before models, please enter the "IMMO 1" to program (for pin code, it is recommended to select group 4 first). For other Renault models please select "IMMO 1" to program, if the pin code is wrong, please switch ignition on and wait for 1 minute or so to try another group of pin code again. The wrong code prompt will be "Login failed" or "system does not support login operation".

Attention

1. "IMMO 2" generally only for the Koleos models, if failed to program, for 2010-before models, please enter the "IMMO 1" to program (for pin code, it is recommended to select group 4 first). For other Renault models please select "IMMO 1" to program, if the pin code is wrong, please switch ignition on and wait for 1 minute or so to try another group of pin code again. The wrong code prompt will be "Login failed" or "system does not support login operation".
2. The low voltage when programming will lead to the operation prompt "Login failed";
3. For Megane models pin code, it is recommended to choose group 2;
4. For 2011-after Koleos, after the dismantle&read data process, if there is prompt that "Login failed" during programming, please turn on ignition and wait for not less than a minute, if program again, please follow the device prompt to insert key when necessary.

Reference

Chip model: Dedicated 46 chip (For Keleos it is suggest to use 7952 smart key, for Renault models it is basically the same)

Remote type: Dedicated smart key

Key embryo no.: Dedicated small smart key/ Keleos No.53

PIN code requirement: Dedicated smart key

Remote generation: Program smart key complete, remote will automatically generated

OBD position:

Under the steering wheel(below is Keleos)

(Renault models OBD positions are basically located under the steering wheel, in front of the gear, or under the central armrest box)



For Scenic: push the central armrest box to the right, under the cover:



Keleos 2011-after car model:



The car key



For Keleos smart key, the induction key slot lies in front of the gear:



Operation

[Program smart key](#)

1. click the start button, open the driver door;
2. The system is obtaining the pin code, if the car model is obtainable, please select the pin code. If can't be identified, please use the programmer to read the onboard computer EEPROM data into the host, the specific operation is as follows:
 - ① With the USB cable to connect K518ISE host to the computer, the computer will show the host internal storage;
 - ② Copy the .bin (lowercase) format files to the host's customfile directory;
 - ③ Return to the smart key programming operation, select the import file for secret read.

3. Insert the smart key to be programmed, program the first key completed, to program

more, please follow the prompts to proceed;

4. If not continue programming, remove the smart key, program complete.

Collision recovery

If the car collided, the system will automatically start the protection program, and after

repairing, it is required to cancel the protection via this function to start the vehicle.

Step 1: Connect the device; Step 2: System communicating to clear fault information; Step 3: Complete.

Dismantle & read direction:

1. For Koleos 2010 and before can be programmed directly, for 2011-after cars require to

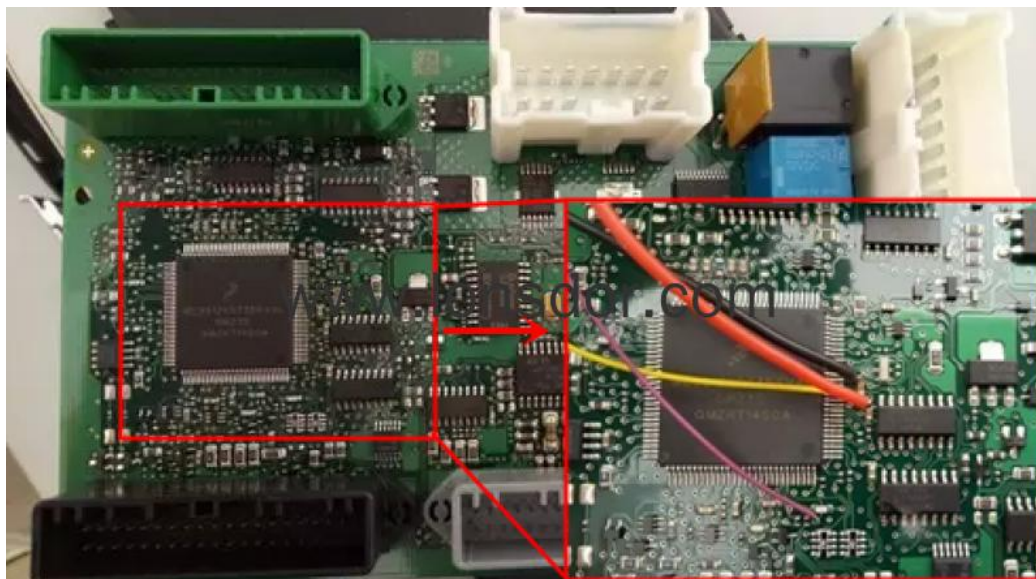
Dismantle & read to backup EEPROM data (under the bottom left of steering wheel):



Keleos BCM:



2. Please follow the wiring diagram on the programmer to wire (below for reference only):



Read the bin file, import it into K518: Please use the USB cable to connect K518ISE with computer, open the device internal memory, find the folder "customfile" and put BIN file into it.

(Note: Bin file suffix "bin" must be in lowercase, it is required to put the file directly into

the folder, instead of creating a new folder):



4. The file is imported, please program.